



License No. 800025015
FL License # CMTL-0003
CLIA No. 10D1094068

Certificate of Analysis

Compliance Test

3CHI
274 MEDICAL DR # 875
CARMEL, IN 46082

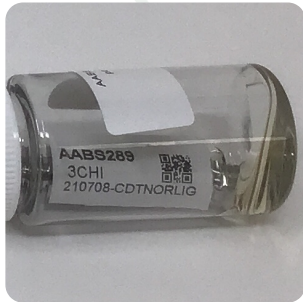
Batch # 210708-CDT-NORLIG
Batch Date: 2021-07-08
Extracted From: HEMP

Sampling Method: MSP 7.3.1
Test Reg State: Florida

Order # 3CH210802-200009
Order Date: 2021-08-02
Sample # AABS289

Sampling Date: 2021-08-04
Lab Batch Date: 2021-08-04
Completion Date: 2021-08-09

Initial Gross Weight: 74.705 g



Product Image

- Potency Tested**
- Terpenes Tested**
- Heavy Metals Passed**
- Mycotoxins Passed**
- Pesticides Passed**
- Residual Solvents Passed**
- Pathogenic Microbiology Passed**
- Listeria Monocytogenes Passed**

Delta 8/Delta 10 Potency

12

Tested
(LCUV)

Potency Summary

Specimen Weight: 51.040 mg

Analyte	Dilution (1:n)	LOD (%)	LOQ (%)	Result (mg/g)	(%)
Delta-8 THC	1000.000	0.000026	0.001	856.000	85.600
Delta-10 THC	1000.000	0.000003	0.001	<LOQ	<LOQ
Delta-9 THC	1000.000	0.000013	0.001	<LOQ	<LOQ
CBC	1000.000	0.000018	0.001	<LOQ	<LOQ
CBD	1000.000	0.000054	0.001	<LOQ	<LOQ
THCV	1000.000	0.000007	0.001	<LOQ	<LOQ
THCA-A	1000.000	0.000032	0.001	<LOQ	<LOQ
CBN	1000.000	0.000014	0.001	<LOQ	<LOQ
CBGA	1000.000	0.00008	0.001	<LOQ	<LOQ
CBG	1000.000	0.000248	0.001	<LOQ	<LOQ
CBDV	1000.000	0.000065	0.001	<LOQ	<LOQ
CBDA	1000.000	0.00001	0.001	<LOQ	<LOQ

Total Delta 8 85.600%	Total Delta 10 None Detected
Total THC None Detected	Total CBD None Detected
Total CBG None Detected	Total CBN None Detected
Other Cannabinoids None Detected	Total Cannabinoids 85.600%

Terpenes Summary

Analyte	Result (mg/g)	(%)
beta-Myrcene	8.167	0.817%
trans-Caryophyllene	4.112	0.411%
alpha-Pinene	2.392	0.239%
(R)-(+)-Limonene	2.224	0.222%
alpha-Humulene	1.284	0.128%
Farnesene	1.201	0.12%
beta-Pinene	0.674	0.067%

Total Terpenes: 2.004%

Detailed Terpenes Analysis is on the following page

Xueli Gao
Xueli Gao
Ph.D., DABT
Lab Toxicologist

Aixia Sun
Aixia Sun
D.H.Sc., M.Sc., B.Sc., MT (AAB)
Lab Director/Principal Scientist



Definitions and Abbreviations used in this report: *Total CBD = CBD + (CBD-A * 0.877), *Total THC = THCA-A * 0.877 + Delta 9 THC, *CBG Total = (CBGA * 0.877) + CBG, *CBN Total = (CBNA * 0.877) + CBN, *Other Cannabinoids Total = CBC + CBDV + THCV + THCV-A, *Total Detected Cannabinoids = CBD Total + CBG Total + CBN Total + THC Total + CBC + CBDV + THCV + THCV-A, *Analyte Details above show the Dry Weight Concentrations unless specified as 12% moisture concentration. (mg/ml) = Milligrams per Milliliter, LOQ = Limit of Quantitation, LOD = Limit of Detection, Dilution = Dilution Factor (ppb) = Parts per Billion, (%) = Percent, (cfu/g) = Colony Forming Unit per Gram (cfu/g) = Colony Forming Unit per Gram, LOD = Limit of Detection, (µg/g) = Microgram per Gram (ppm) = Parts per Million, (ppm) = (µg/g), (aw) = aw (area ratio) = Area Ratio, (mg/Kg) = Milligram per Kilogram, *Measurement of Uncertainty = +/- 5%

This report shall not be reproduced, without written approval, from ACS Laboratory. The results of this report relate only to the material or product analyzed. Test results are confidential unless explicitly waived otherwise. Accredited by a third-party accrediting body as a competent testing laboratory pursuant to ISO/IEC 17025 of the International Organization for Standardization.





License No. 800025015
FL License # CMTL-0003
CLIA No. 10D1094068

Certificate of Analysis

Compliance Test

3CHI
274 MEDICAL DR # 875
CARMEL, IN 46082

Batch # 210708-CDT-NORLIG
Batch Date: 2021-07-08
Extracted From: HEMP

Sampling Method: MSP 7.3.1
Test Reg State: Florida

Order # 3CH210802-200009
Order Date: 2021-08-02
Sample # AABS289

Sampling Date: 2021-08-04
Lab Batch Date: 2021-08-04
Completion Date: 2021-08-09

Initial Gross Weight: 74.705 g



Terpenes - FL

Specimen Weight: 51.040 mg

Tested
(GC/GCMS)

Dilution Factor: 20.000

Analyte	LOQ (%)	Result (mg/g)	(%)	Analyte	LOQ (%)	Result (mg/g)	(%)
beta-Myrcene	0.02	8.167	0.817	trans-Caryophyllene	0.02	4.112	0.411
alpha-Pinene	0.02	2.392	0.239	(R)-(+)-Limonene	0.02	2.224	0.222
alpha-Humulene	0.02	1.284	0.128	Farnesene	0.02	1.201	0.120
beta-Pinene	0.02	0.674	0.067	Ocimene	0.014	<LOQ	<LOQ
Hexahydrothymol	0.02	<LOQ	<LOQ	Isoborneol	0.02	<LOQ	<LOQ
Isopulegol	0.02	<LOQ	<LOQ	Linalool	0.02	<LOQ	<LOQ
Nerol	0.02	<LOQ	<LOQ	(+)-Cedrol	0.02	<LOQ	<LOQ
Pulegone	0.02	<LOQ	<LOQ	Sabinene	0.02	<LOQ	<LOQ
Geranyl acetate	0.02	<LOQ	<LOQ	Sabinene Hydrate	0.02	<LOQ	<LOQ
Terpinolene	0.02	<LOQ	<LOQ	Total Terpeneol	0.02	<LOQ	<LOQ
trans-Nerolidol	0.02	<LOQ	<LOQ	Guaial	0.02	<LOQ	<LOQ
Fenchone	0.02	<LOQ	<LOQ	Geraniol	0.02	<LOQ	<LOQ
3-Carene	0.02	<LOQ	<LOQ	alpha-Bisabolol	0.02	<LOQ	<LOQ
alpha-Cedrene	0.02	<LOQ	<LOQ	alpha-Phellandrene	0.02	<LOQ	<LOQ
alpha-Terpinene	0.02	<LOQ	<LOQ	Borneol	0.04	<LOQ	<LOQ
Camphene	0.02	<LOQ	<LOQ	Camphors	0.04	<LOQ	<LOQ
Caryophyllene oxide	0.02	<LOQ	<LOQ	cis-Nerolidol	0.02	<LOQ	<LOQ
Eucalyptol	0.02	<LOQ	<LOQ	Fenchyl Alcohol	0.02	<LOQ	<LOQ
Gamma-Terpinene	0.02	<LOQ	<LOQ	Valencene	0.02	<LOQ	<LOQ

Total Terpenes: 2.004%

Xueli Gao
Xueli Gao Lab Toxicologist
Ph.D., DABT

Aixia Sun
Aixia Sun Lab Director/Principal Scientist
D.H.Sc., M.Sc., B.Sc., MT (AAB)



Definitions and Abbreviations used in this report: *Total CBD = CBD + (CBD-A * 0.877), *Total THC = THC-A * 0.877 + Delta 9 THC, *CBG Total = (CBGA * 0.877) + CBG, *CBN Total = (CBNA * 0.877) + CBN, *Other Cannabinoids Total = CBC + CBDV + THCV + THCV-A, *Total Detected Cannabinoids = CBD Total + CBG Total + CBN Total + THC Total + CBC + CBDV + THCV + THCV-A, *Analyte Details above show the Dry Weight Concentrations unless specified as 12% moisture concentration. (mg/ml) = Milligrams per Milliliter, LOQ = Limit of Quantitation, LOD = Limit of Detection, Dilution = Dilution Factor (ppb) = Parts per Billion, (%) = Percent, (cfu/g) = Colony Forming Unit per Gram (cfu/g) = Colony Forming Unit per Gram, , LOD = Limit of Detection, (µg/g) = Microgram per Gram (ppm) = Parts per Million, (ppm) = (µg/g), (aw) = aw (area ratio) = Area Ratio, (mg/Kg) = Milligram per Kilogram, *Measurement of Uncertainty = +/- 5%



This report shall not be reproduced, without written approval, from ACS Laboratory. The results of this report relate only to the material or product analyzed. Test results are confidential unless explicitly waived otherwise. Accredited by a third-party accrediting body as a competent testing laboratory pursuant to ISO/IEC 17025 of the International Organization for Standardization.



License No. 800025015
FL License # CMTL-0003
CLIA No. 10D1094068

Certificate of Analysis

Compliance Test

3CHI
274 MEDICAL DR # 875
CARMEL, IN 46082

Batch # 210708-CDT-NORLIG
Batch Date: 2021-07-08
Extracted From: HEMP

Sampling Method: MSP 7.3.1
Test Reg State: Florida

Order # 3CH210802-200009
Order Date: 2021-08-02
Sample # AABS289

Sampling Date: 2021-08-04
Lab Batch Date: 2021-08-04
Completion Date: 2021-08-09

Initial Gross Weight: 74.705 g

Heavy Metals

Specimen Weight: 251.600 mg

Passed
(ICP-MS)

Dilution Factor: 2.000

Analyte	LOQ (ppb)	Action Level (ppb)	Result (ppb)	Analyte	LOQ (ppb)	Action Level (ppb)	Result (ppb)
Arsenic (As)	100	1500	<LOQ	Cadmium (Cd)	100	500	<LOQ
Lead (Pb)	100	500	<LOQ	Mercury (Hg)	100	3000	<LOQ

Mycotoxins

Specimen Weight: 179.700 mg

Passed
(LCMS)

Dilution Factor: 8.347

Analyte	LOQ (ppb)	Action Level (ppb)	Result (ppb)	Analyte	LOQ (ppb)	Action Level (ppb)	Result (ppb)
Aflatoxin B1	6	20	<LOQ	Aflatoxin B2	6	20	<LOQ
Aflatoxin G1	6	20	<LOQ	Aflatoxin G2	6	20	<LOQ
Ochratoxin A	12	20	<LOQ				

Xueli Gao
Xueli Gao Lab Toxicologist
Ph.D., DABT

Aixia Sun
Aixia Sun Lab Director/Principal Scientist
D.H.Sc., M.Sc., B.Sc., MT (AAB)



Definitions and Abbreviations used in this report: *Total CBD = CBD + (CBD-A * 0.877), *Total THC = THCA-A * 0.877 + Delta 9 THC, *CBG Total = (CBGA * 0.877) + CBG, *CBN Total = (CBNA * 0.877) + CBN, *Other Cannabinoids Total = CBC + CBDV + THCV + THCV-A, *Total Detected Cannabinoids = CBD Total + CBG Total + CBN Total + THC Total + CBC + CBDV + THCV + THCV-A, *Analyte Details above show the Dry Weight Concentrations unless specified as 12% moisture concentration. (mg/ml) = Milligrams per Milliliter, LOQ = Limit of Quantitation, LOD = Limit of Detection, Dilution = Dilution Factor (ppb) = Parts per Billion, (%) = Percent, (cfu/g) = Colony Forming Unit per Gram (cfu/g) = Colony Forming Unit per Gram, , LOD = Limit of Detection, (µg/g) = Microgram per Gram (ppm) = Parts per Million, (ppm) = (µg/g), (aw) = aw (area ratio) = Area Ratio, (mg/Kg) = Milligram per Kilogram, *Measurement of Uncertainty = +/- 5%



This report shall not be reproduced, without written approval, from ACS Laboratory. The results of this report relate only to the material or product analyzed. Test results are confidential unless explicitly waived otherwise. Accredited by a third-party accrediting body as a competent testing laboratory pursuant to ISO/IEC 17025 of the International Organization for Standardization.



License No. 800025015
FL License # CMTL-0003
CLIA No. 10D1094068

Certificate of Analysis

Compliance Test

3CHI
274 MEDICAL DR # 875
CARMEL, IN 46082

Batch # 210708-CDT-NORLIG
Batch Date: 2021-07-08
Extracted From: HEMP

Sampling Method: MSP 7.3.1
Test Reg State: Florida

Order # 3CH210802-200009
Order Date: 2021-08-02
Sample # AABS289

Sampling Date: 2021-08-04
Lab Batch Date: 2021-08-04
Completion Date: 2021-08-09

Initial Gross Weight: 74.705 g



Pesticides FL V4

Specimen Weight: 179.700 mg

Passed
(LCMS/GCMS)

Dilution Factor: 8.347

Analyte	LOQ (ppb)	Action Level (ppb)	Result (ppb)	Analyte	LOQ (ppb)	Action Level (ppb)	Result (ppb)
Abamectin	28.23	300	<LOQ	Acephate	30	3000	<LOQ
Acequinocyl	48	2000	<LOQ	Acetamiprid	30	3000	<LOQ
Aldicarb	30	100	<LOQ	Azoxystrobin	10	3000	<LOQ
Bifenazate	30	3000	<LOQ	Bifenthrin	30	500	<LOQ
Boscalid	10	3000	<LOQ	Captan	30	3000	<LOQ
Carbaryl	10	500	<LOQ	Carbofuran	10	100	<LOQ
Chlorantraniliprole	10	3000	<LOQ	Chlordane	10	100	<LOQ
Chlorfenapyr	30	100	<LOQ	Chlormequat Chloride	10	3000	<LOQ
Chlorpyrifos	30	100	<LOQ	Clofentezine	30	500	<LOQ
Coumaphos	48	100	<LOQ	Cyfluthrin	30	1000	<LOQ
Cypermethrin	30	1000	<LOQ	Daminozide	30	100	<LOQ
Diazinon	30	200	<LOQ	Dichlorvos	30	100	<LOQ
Dimethoate	30	100	<LOQ	Dimethomorph	48	3000	<LOQ
Ethoprophos	30	100	<LOQ	Etofenprox	30	100	<LOQ
Etoxazole	30	1500	<LOQ	Fenhexamid	10	3000	<LOQ
Fenoxycarb	30	100	<LOQ	Fenpyroximate	30	2000	<LOQ
Fipronil	30	100	<LOQ	Flonicamid	30	2000	<LOQ
Fludioxonil	48	3000	<LOQ	Hexythiazox	30	2000	<LOQ
Imazalil	30	100	<LOQ	Imidacloprid	30	3000	<LOQ
Kresoxim Methyl	30	1000	<LOQ	Malathion	30	2000	<LOQ
Metaxyl	10	3000	<LOQ	Methiocarb	30	100	<LOQ
Methomyl	30	100	<LOQ	methyl-Parathion	10	100	<LOQ
Mevinphos	10	100	<LOQ	Myclobutanil	30	3000	<LOQ
Naled	30	500	<LOQ	Oxamyl	30	500	<LOQ
Paclotrazol	30	100	<LOQ	Pentachloronitrobenzene	10	200	<LOQ
Permethrin	30	1000	<LOQ	Phosmet	30	200	<LOQ
Piperonylbutoxide	30	3000	<LOQ	Prallethrin	30	400	<LOQ
Propiconazole	30	1000	<LOQ	Propoxur	30	100	<LOQ
Pyrethrins	30	1000	<LOQ	Pyridaben	30	3000	<LOQ
Spinetoram	10	3000	<LOQ	Spinosad	30	3000	<LOQ
Spiromesifen	30	3000	<LOQ	Spirotetramat	30	3000	<LOQ
Spiroxamine	30	100	<LOQ	Tebuconazole	30	1000	<LOQ
Thiacloprid	30	100	<LOQ	Thiamethoxam	30	1000	<LOQ
Trifloxystrobin	30	3000	<LOQ				

Xueli Gao
Ph.D., DABT
Lab Toxicologist

Aixia Sun
D.H.Sc., M.Sc., B.Sc., MT (AAB)
Lab Director/Principal Scientist



Definitions and Abbreviations used in this report: *Total CBD = CBD + (CBD-A * 0.877), *Total THC = THCA-A * 0.877 + Delta 9 THC, *CBG Total = (CBGA * 0.877) + CBG, *CBN Total = (CBNA * 0.877) + CBN, *Other Cannabinoids Total = CBC + CBDV + THCV + THCV-A, *Total Detected Cannabinoids = CBD Total + CBG Total + CBN Total + THC Total + CBC + CBDV + THCV + THCV-A, *Analyte Details above show the Dry Weight Concentrations unless specified as 12% moisture concentration. (mg/ml) = Milligrams per Milliliter, LOQ = Limit of Quantitation, LOD = Limit of Detection, Dilution = Dilution Factor (ppb) = Parts per Billion, (%) = Percent, (cfu/g) = Colony Forming Unit per Gram (cfu/g) = Colony Forming Unit per Gram, , LOD = Limit of Detection, (µg/g) = Microgram per Gram (ppm) = Parts per Million, (ppm) = (µg/g), (aw) = aw (area ratio) = Area Ratio, (mg/Kg) = Milligram per Kilogram, *Measurement of Uncertainty = +/- 5%



This report shall not be reproduced, without written approval, from ACS Laboratory. The results of this report relate only to the material or product analyzed. Test results are confidential unless explicitly waived otherwise. Accredited by a third-party accrediting body as a competent testing laboratory pursuant to ISO/IEC 17025 of the International Organization for Standardization.



License No. 800025015
FL License # CMTL-0003
CLIA No. 10D1094068

Certificate of Analysis

Compliance Test

3CHI
274 MEDICAL DR # 875
CARMEL, IN 46082

Batch # 210708-CDT-NORLIG
Batch Date: 2021-07-08
Extracted From: HEMP

Sampling Method: MSP 7.3.1
Test Reg State: Florida

Order # 3CH210802-200009
Order Date: 2021-08-02
Sample # AABS289

Sampling Date: 2021-08-04
Lab Batch Date: 2021-08-04
Completion Date: 2021-08-09

Initial Gross Weight: 74.705 g



Residual Solvents - FL (CBD)

Specimen Weight: 9.700 mg

Passed
(GCMS)

Dilution Factor: 1.000

Analyte	LOQ (ppm)	Action Level (ppm)	Result (ppm)	Analyte	LOQ (ppm)	Action Level (ppm)	Result (ppm)
Acetone	2.08	5000	<LOQ	Benzene	0.02	2	<LOQ
Butanes	2.5	2000	<LOQ	Ethanol	2.78	5000	<LOQ
Ethyl Acetate	1.11	5000	<LOQ	Heptane	1.39	5000	<LOQ
Hexane	1.17	290	<LOQ	Isopropyl alcohol	1.39	500	<LOQ
Methanol	0.69	3000	<LOQ	Pentane	2.08	5000	<LOQ
Propane	5.83	2100	<LOQ	Toluene	2.92	890	<LOQ
Total Xylenes	2.92	2170	<LOQ				



Pathogenic Microbiology SAE (MicroArray)

Specimen Weight: 1029.190 mg

Passed
(Micro Array)

Dilution Factor: 1.000

Analyte	Result (cfu/g)	Analyte	Result (cfu/g)
Aspergillus flavus	Absence in 1g	Aspergillus fumigatus	Absence in 1g
Aspergillus niger	Absence in 1g	Aspergillus terreus	Absence in 1g
Salmonella	Absence in 1g	STECE. Coli	Absence in 1g

Xueli Gao
Xueli Gao Lab Toxicologist
Ph.D., DABT

Aixia Sun
Aixia Sun Lab Director/Principal Scientist
D.H.Sc., M.Sc., B.Sc., MT (AAB)



Definitions and Abbreviations used in this report: *Total CBD = CBD + (CBD-A * 0.877), *Total THC = THCA-A * 0.877 + Delta 9 THC, *CBG Total = (CBGA * 0.877) + CBG, *CBN Total = (CBNA * 0.877) + CBN, *Other Cannabinoids Total = CBC + CBDV + THCV + THCV-A, *Total Detected Cannabinoids = CBD Total + CBG Total + CBN Total + THC Total + CBC + CBDV + THCV + THCV-A, *Analyte Details above show the Dry Weight Concentrations unless specified as 12% moisture concentration. (mg/ml) = Milligrams per Milliliter, LOQ = Limit of Quantitation, LOD = Limit of Detection, Dilution = Dilution Factor (ppb) = Parts per Billion, (%) = Percent, (cfu/g) = Colony Forming Unit per Gram (cfu/g) = Colony Forming Unit per Gram, , LOD = Limit of Detection, (µg/g) = Microgram per Gram (ppm) = Parts per Million, (ppm) = (µg/g), (aw) = aw (area ratio) = Area Ratio, (mg/Kg) = Milligram per Kilogram, *Measurement of Uncertainty = +/- 5%



This report shall not be reproduced, without written approval, from ACS Laboratory. The results of this report relate only to the material or product analyzed. Test results are confidential unless explicitly waived otherwise. Accredited by a third-party accrediting body as a competent testing laboratory pursuant to ISO/IEC 17025 of the International Organization for Standardization.



License No. 800025015
FL License # CMTL-0003
CLIA No. 10D1094068

Certificate of Analysis

Compliance Test

3CHI
274 MEDICAL DR # 875
CARMEL, IN 46082

Batch # 210708-CDT-NORLIG
Batch Date: 2021-07-08
Extracted From: HEMP

Sampling Method: MSP 7.3.1
Test Reg State: Florida

Order # 3CH210802-200009
Order Date: 2021-08-02
Sample # AABS289

Sampling Date: 2021-08-04
Lab Batch Date: 2021-08-04
Completion Date: 2021-08-09

Initial Gross Weight: 74.705 g



Listeria Monocytogenes

Specimen Weight: 1001.200 mg

Passed
(qPCR)

Dilution Factor: 1.000

Analyte	Action Level (cfu/g)	Result
Listeria Monocytogenes	1	Absence in 1g

Xueli Gao
Xueli Gao Lab Toxicologist
Ph.D., DABT

Aixia Sun
Aixia Sun Lab Director/Principal Scientist
D.H.Sc., M.Sc., B.Sc., MT (AAB)



Definitions and Abbreviations used in this report: *Total CBD = CBD + (CBD-A * 0.877), *Total THC = THCA-A * 0.877 + Delta 9 THC, *CBG Total = (CBGA * 0.877) + CBG, *CBN Total = (CBNA * 0.877) + CBN, *Other Cannabinoids Total = CBC + CBDV + THCV + THCV-A, *Total Detected Cannabinoids = CBD Total + CBG Total + CBN Total + THC Total + CBC + CBDV + THCV + THCV-A, *Analyte Details above show the Dry Weight Concentrations unless specified as 12% moisture concentration. (mg/ml) = Milligrams per Milliliter, LOQ = Limit of Quantitation, LOD = Limit of Detection, Dilution = Dilution Factor (ppb) = Parts per Billion, (%) = Percent, (cfu/g) = Colony Forming Unit per Gram (cfu/g) = Colony Forming Unit per Gram, , LOD = Limit of Detection, (µg/g) = Microgram per Gram (ppm) = Parts per Million, (ppm) = (µg/g), (aw) = aw (area ratio) = Area Ratio, (mg/Kg) = Milligram per Kilogram, *Measurement of Uncertainty = +/- 5%



This report shall not be reproduced, without written approval, from ACS Laboratory. The results of this report relate only to the material or product analyzed. Test results are confidential unless explicitly waived otherwise. Accredited by a third-party accrediting body as a competent testing laboratory pursuant to ISO/IEC 17025 of the International Organization for Standardization.