

Report: COA Evaluation Summary

OLCC License No. 10087092BDA | ORELAP ID. 4147

545 SW 2nd Street, Corvallis OR. 97333 | 541.257.5002 | services@preelab.com | Preelab.com

For R&D Purposes Only.

Product Description

Client: **3Chi**

Product Name: **3chi Oil**

Process Lot: 211001-3C

Matrix: Hemp Concentrate

Metrc Source ID: n/a

Metrc Package ID: n/a

License Number: 18_0235

Date Collected: 2021-10-07

Date Received: 2021-10-07

Report Date: 2021-10-12

Report ID: A4815-01

Tests Requested: Cannabinoid Potency Analysis

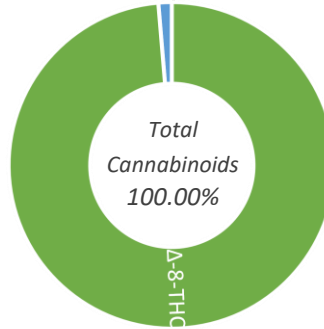
Evaluation Summary

Moisture Analysis | Test Not Required

Cannabinoid Potency Analysis

Total THC *
0.00 %
0.0 mg/g

Total CBD *
0.00 %
0.0 mg/g



Abrv.	Dry Wt. %	Dry Wt. mg/g
THCA	< LOQ	< LOQ
Δ-9-THC	< LOQ	< LOQ
Δ-8-THC	100.00 % (A)	1000.0 mg/g
THCV	< LOQ	< LOQ
CBDA	< LOQ	< LOQ
CBD	< LOQ	< LOQ
CBGA	< LOQ	< LOQ
CBG	< LOQ	< LOQ
CBDVA	< LOQ	< LOQ
CBDV	< LOQ	< LOQ
CBN	1.35 %	13.5 mg/g
CBL	< LOQ	< LOQ
CBC	< LOQ	< LOQ

* moisture compensated & adjusted for the loss of carboxylic acid group - OAR 333-064-0100

Report: Case Narrative

This certificate of analysis is prepared for...

3Chi

Carmel, IN 46032

This report presents the analytical findings for the sample collected on 2021-10-07 by Michael Ottman and received by PREE Laboratory on 2021-10-07. The sample was assigned a laboratory ID of A4815-01. The results in this report only apply to sample A4815-01.

This report shall not be reproduced, except in full, without written consent of PREE Laboratory. Report alterations by any other entity beside PREE Laboratory are not allowed. If alterations are made to the original report after the initial release, they will be noted on the case narrative below.

The testing methods used are of sufficient sensitivity to meet the compliance criteria set in OAR 333-007. However, it is the responsibility of the client to utilize the data to comply with standards set in OAR 333-007.

All analyses were performed in accordance with PREE Laboratory's NELAP/TNI approved quality control system and all quality control data was within the laboratory's predefined acceptance criteria unless otherwise noted in the case narrative of this report. General comments are also recorded below.

Notes:

The Oregon Department of Agriculture requires hemp products to not contain more than 0.35% total THC, per OAR 603-048. The tested Total Cannabinoid concentration was found to be adjusted to 101.61 %. This is within the method uncertainty and, as a result, the reported concentration was adjusted to 100.00%.

No special conditions were noted during the processing and testing of the sample.



Sardar, Tamzid M. | Laboratory Director
Corvallis, Oregon



If you have any questions regarding the information in this report, please feel free to call 541-257-5002 or email PREE at services@preelab.com.

Report: Evaluation Detail

OLCC License No. 10087092BDA | ORELAP ID. 4147

545 SW 2nd Street, Corvallis OR. 97333 | 541.257.5002 | services@preelab.com | Preelab.com

For R&D Purposes Only.

Moisture Analysis	Evaluation Detail					
	Moisture Analysis	Test Not Requested/Required				
Cannabinoid Potency Analysis	Evaluation Detail					
Product Name: 3chi Oil	Cannabinoid Potency Analysis	Compound	Abrv.	Dry Wt. (%)	Dry Wt. (mg/g)	RL (%)
Analysis Date: 2021-10-10	Total THC *	Tetrahydro-cannabinolic acid	THCA	< LOQ	< LOQ	0.2 %
Testing Batch ID: V1832,1831,1824,1823,1820,1799	0.00 %	Delta9 Tetrahydro-cannabinol	Δ-9-THC	< LOQ	< LOQ	0.2 %
Testing Method: LSOP #303 Cannabinoid Quantification	0.0 mg/g	Delta8 Tetrahydro-cannabinol	Δ-8-THC	100.00 % (A)	1000.0	0.2 %
		Tetrahydrocannabivarin	THCV	< LOQ	< LOQ	0.2 %
	Total CBD *	Cannabidiolic acid	CBDA	< LOQ	< LOQ	0.2 %
	0.00 %	Cannabidiol	CBD	< LOQ	< LOQ	0.2 %
	0.0 mg/g	Cannabigerolic acid	CBGA	< LOQ	< LOQ	0.2 %
		Cannabigerol	CBG	< LOQ	< LOQ	0.2 %
		Cannabidivarinic acid	CBDVA	< LOQ	< LOQ	0.2 %
		Cannabidivarin	CBDV	< LOQ	< LOQ	0.2 %
		Cannabinol	CBN	1.35 %	13.5	0.2 %
		Cannabicyclol	CBL	< LOQ	< LOQ	0.2 %
		Cannabichromene	CBC	< LOQ	< LOQ	0.2 %

Note: Accreditation for Δ-8-THC, THCV, CBGA, CBG, CBDVA, CBDV, CBL, CBC, CBN is not offered by ORELAP and therefore are not accredited tests.

* moisture compensated & adjusted for the loss of carboxylic acid group - OAR 333-064-0100

Report: Quality Check

Moisture Analysis	Quality Control Detail						
	Moisture Analysis						
	Test Not Requested/Required						
Cannabinoid Potency Analysis	Quality Control Detail						
Analysis Date: 2021-10-10	Cannabinoid Potency Analysis		MB	LCS	Expected Value (%)	Tested Value (%)	Pass Criteria
Testing Batch ID: V1832,1831,1824,1823,1820,1799	Tetrahydro-cannabinolic acid		○		< 0.1%	Not Used	< 0.1%
	Delta9 Tetrahydro-cannabinol		○		< 0.1%	Not Used	< 0.1%
	Cannabidiolic acid		○		< 0.1%	Not Used	< 0.1%
	Cannabidiol		○		< 0.1%	Not Used	< 0.1%
	Tetrahydro-cannabinolic acid			●	100.0%	95.0%	80-120%
	Delta9 Tetrahydro-cannabinol			●	100.0%	107.1%	80-120%
	Cannabidiolic acid			●	100.0%	93.5%	80-120%
Cannabidiol			●	100.0%	107.2%	80-120%	

Note: Accreditation for Δ-8-THC, THCV, CBGA,CBG, CBDVA, CBDV, CBL, CBC, CBN is not offered by ORELAP and therefore are not accredited tests.

Definitions

- Limit of Quantitation (LOQ) : The minimum level, concentration, or quantity of a target analyte that can be reported with a specific degree of confidence.
- Method Blank (MB) : A quality control sample that is free of the analyte being measured.
- Laboratory Control Sample (LCS) : A quality control sample with a known amount of the analyte used to demonstrate accuracy.
- Field Duplicate : A second sample collected in the field using the same sampling method as the primary sample.
- Action Limit : Analyte levels set by the state of Oregon (OAR 333-007) indicating that follow-up action is necessary.
- ppm : parts per million, equivalent to 1 µg/g and 1 µg/L or 0.001 mg/g and 0.001 mg/L
- COA : Certificate of Analysis.
- Report Flag (A) : Compound tested over 100% or 1000 mg/g. The test result is within the method uncertainty and instrument result is not above the upper limit of quantitation. Value will be adjusted down to 100% or 1000 mg/kg in the reporting process.
- Report Flag (B) : Blank contamination - The analyte was detected above one-half the reporting limit in an associated blank.
- Report Flag (E) : Compound tested above the upper limit of quantitation.
- Report Flag (Q) : One or more quality control criteria (for example, LCS recovery, surrogate spike recovery) failed.

Calculations

- Cannabinoid Potency :
$$\text{Wet WT\%} = (\text{Exported concentration ppm}) \times (\text{Dilution}) \times (\text{Extraction Vol./Wet wt mg}) \times 100$$
$$\text{Total THC\%} = (\% \text{THCA}) \times 0.877 + (\% \text{THC})$$
$$\text{Total CBD\%} = (\% \text{CBDA}) \times 0.877 + (\% \text{CBD})$$
$$\text{Total THC (Dry WT)\%} = \% \text{ total THC(wet)} / [1 - (\% \text{moisture}/100)]$$
$$\text{Total CBD (Dry WT)\%} = \% \text{ total CBD(wet)} / [1 - (\% \text{moisture}/100)]$$
- Percentage Recovery :
$$\% \text{ Rec.} = [(\text{Amount measured}) / (\text{Known amount})] \times 100$$

Disclaimers

- Disposal : All marijuana and hemp products received by PREE will be disposed of following the OLCC's rules for Marijuana Waste Management, regardless of product type, unless PREE is given specific disposal instructions for a product based on test results from state regulatory agencies.